

TECHNICAL ANALYSIS

TRADING DISCIPLINE

Our main goal is to help investors to anticipate what is "likely" to happen to prices over time.

July 01st, 2026

Egyptian Exchange Benchmark Index “Relief Rallies Are Emotional Traps” (EGX30)

Last Session Close	50,488
Last Session High	50,703
Last Session Low	49,829
1st Support (ST)	49,700
2nd Support (ST)	48,000
1st Resistance (ST)	50,700
2nd Resistance (ST)	51,700
Stop Loss (ST)	49,700

HISTORICAL RETURN %	
1 WEEK	-1.86%
1 MONTH	-4.12%
3 MONTHS	11.40%
1 YEAR	53.66%
YTD	20.70%



COMMENTARY

- The “EGX30” rebounded from the 49,700-50,000 support zone, closing yesterday’s trading session at 50,488 level, after buyers stepped in to reject lower prices. On the surface, the session restored some confidence, with market breadth improving significantly as 192 stocks advanced against only 35 declined. Yet beneath the recovery, the market continues to tell a more cautious story.
- **The tape reveals that foreign institutions remained aggressive net sellers, while Egyptian institutions participated only modestly after being largely absent during the initial test of support.** This suggests the market is no longer being driven by the same institutional conviction that fueled the March accumulation and April markup. Instead, much of the buying continues to come from local investors who remain encouraged by the recent history of successful buy the dip opportunities.
- **From a psychological perspective,** hope is still proving stronger than fear. Every successful rebound reinforces the belief that weakness is temporary, encouraging fresh buying and providing the liquidity that allows stronger hands to continue reducing exposure in an orderly manner. The market has defended support, but it has not yet demonstrated the renewed institutional leadership normally associated with the beginning of a new markup phase.
- **Technically,** the index remains constructive while holding above 49,700, with immediate resistance at 51,750, followed by the more important 53,000 area. A decisive recovery above these levels would improve the outlook. Until then, the rebound should be viewed as a successful defense of support rather than confirmation that the broader uptrend has fully regained its strength.

TREND DIRECTION

Short term trend: SIDE-WAY.
Medium term trend: UP.
Long term trend: UP.

PREDICTIONS & TARGETS

Short term target 55,000 point.
Medium term target 57,000 point.
Long term target 65,000 point.

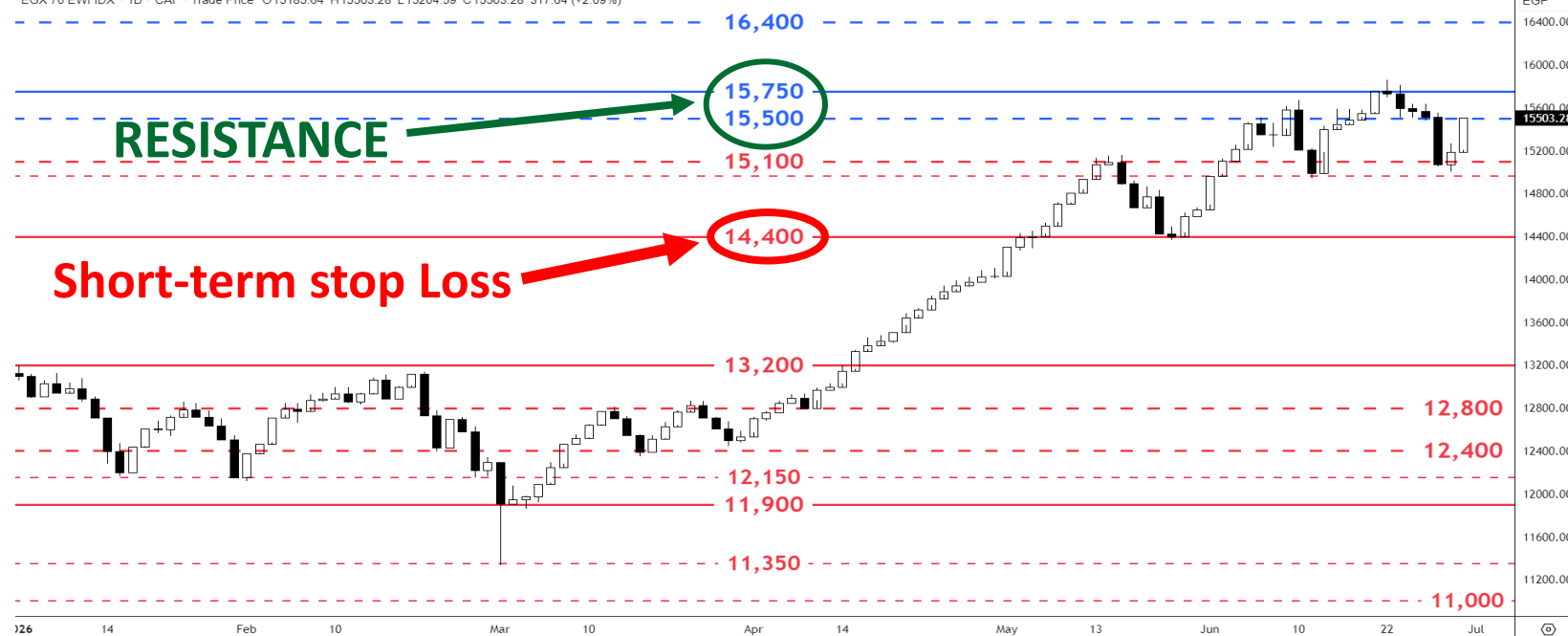
RECOMMENDATION

Short term: HOLD.
Medium term: REDUCE.
Long term: HOLD.

Last Session Close	15,503
Last Session High	15,503
Last Session Low	15,205
1st Support (ST)	15,100
2nd Support (ST)	14,400
1st Resistance (ST)	15,500
2nd Resistance (ST)	15,750
Stop Loss (ST)	14,400

HISTORICAL RETURN %	
1 WEEK	-0.05%
1 MONTH	5.81%
3 MONTHS	23.68%
1 YEAR	55.54%
YTD	18.12%

EGX 70 EWI IDX · 1D · CAI · Trade Price O15185.64 H15503.28 L15204.59 C15503.28 317.64 (+2.09%)



COMMENTARY

- The “EGX70” EWI rebounded strongly from the 15,100 support, closing back above the important 15,500 level. For many retail investors, the recovery felt familiar. Over the past several months, nearly every correction eventually became another profitable buying opportunity. That recent memory remains powerful, encouraging many investors to average down, recover previous losses, or simply trust that buying the dip will work once again.
- **Unlike the powerful advance seen during April, momentum indicators continue to weaken while volatility remains subdued, suggesting that confidence is no longer expanding with price.** The rebound reflects that hope is still alive, but hope alone cannot sustain a healthy markup indefinitely. At the same time, the optimistic voices that gained prominence during the strong bull market continue to shape the narrative across social media, reinforcing the belief that every decline is another opportunity. That belief remains louder than the growing evidence of weakening market quality.
- **Technically**, the index has reclaimed 15,500, keeping the immediate recovery intact, while 15,750 remains the first resistance that buyers need to overcome to restore stronger momentum. Failure to hold above 15,500 would shift attention back toward the critical 15,100 support, where the market would once again need to prove that demand is driven by genuine conviction rather than hope.
- For now, the “EGX70” is not simply measuring price. It is measuring the psychology of the crowd. **The real question is “no longer whether investors are still buying, but why they are buying?”** As long as hope remains stronger than doubt, the index can continue to rebound. But if that hope begins to fade, the crowd may discover that the market has already changed character before they did.

TREND DIRECTION

Short term trend: UP.
Medium term trend: UP.
Long term trend: UP.

PREDICTIONS & TARGETS

Short term target 15,750 point.
Medium term target 16,400 point.
Long term target 18,000 point.

RECOMMENDATION

Short term: HOLD.
Medium term: REDUCE.
Long term: HOLD.

DAILY PICKS (T+0 & T+1)

Symbol	S. Description	LAST PRICE	BUY PRICE & STRATEGY	STOP LOSS	FIRST TARGET	SECOND TARGET	RISK	RETURN
NHPS	National Housing for Professional Syndicates	67.94	BUY Around 67.50	65.50	70.00	72.00	-2.96%	6.67%
ICID	International Company for Investment and Deve	8.39	BUY Around 8.33	8.10	8.60	8.85	-2.76%	6.24%
GBCO	GB Corp	32.45	BUY Around 32.30	31.40	33.30	34.30	-2.79%	6.19%
RAYA	Raya Holding For Financial Investments	7.68	BUY Around 7.63	7.42	7.86	8.10	-2.75%	6.16%

***BUY Around** : is to buy the stock around the given price by 1% fluctuation up and down.

WEEKLY PICKS

Symbol	S. Description	LAST PRICE	BUY PRICE & STRATEGY	STOP LOSS	FIRST TARGET	SECOND TARGET	RISK	RETURN
ETRS	Egyptian Transport	10.70	BUY Around 11.20	10.65	11.70	12.30	-4.91%	9.82%
GBCO	GB Corp	32.45	BUY Around 31.00	29.46	32.00	34.00	-4.97%	9.68%
LCSW	Lecico Egypt	27.92	BUY Around 29.20	27.75	30.50	32.00	-4.97%	9.59%
ISMQ	Iron And Steel for Mines and Quarries	9.06	BUY Around 8.50	8.08	8.85	9.30	-4.94%	9.41%
MPRC	Egyptian Media Production City	38.42	BUY Around 38.00	36.15	39.55	41.50	-4.87%	9.21%
ECAP	El Ezz Porcelain (Gemma)	32.81	BUY Around 33.15	31.50	34.50	36.20	-4.98%	9.20%
OCDI	Six of October Development and Investment	24.78	BUY Around 25.00	23.80	26.00	27.30	-4.80%	9.20%
EMFD	Emaar Misr for Development SAE	11.61	BUY Around 11.65	11.07	12.00	12.70	-4.98%	9.01%

***BUY Around** : is to buy the stock around the given price by 2% fluctuation up and down.

MONTHLY PICKS

Symbol	S. Description	LAST PRICE	BUY PRICE & STRATEGY	STOP LOSS	FIRST TARGET	SECOND TARGET	RISK	RETURN
PHDC	Palm Hills Development	14.60	BUY Around 15.72	14.80	16.50	18.00	-5.85%	14.50%
EGTS	Egyptian for Tourism Resorts	17.45	BUY Around 19.30	18.15	20.50	22.00	-5.96%	13.99%
AMER	Amer Group Holding	2.41	BUY Around 2.73	2.57	2.90	3.10	-5.86%	13.55%
IDRE	New Ismailia Urban Development	42.70	BUY Around 44.50	42.00	47.00	50.00	-5.62%	12.36%
RMDA	Tenth Of Ramadan Pharmaceutical Industries&D	4.95	BUY Around 5.00	4.75	5.25	5.60	-5.00%	12.00%
MENA	Mena Touristic and Real Estate Investment	6.80	BUY Around 6.25	5.90	6.60	7.00	-5.60%	12.00%
POUL	Cairo Poultry	37.15	BUY Around 37.60	35.40	39.50	42.00	-5.85%	11.70%
BONY	Bonyan for Development and Trade	4.78	BUY Around 5.40	5.08	5.70	6.00	-5.93%	11.11%

***BUY Around** : is to buy the stock around the given price by 3% fluctuation up and down.

RECOMMENDATION

Symbol	S. Description	Last	Support 1	Support 2	Resistance 1	Resistance 2	Trend	Recommendation	Stop loss	RISK	RETURN
ABUK	Abou Kir Fertilizers	67.60	66.00	64.50	69.55	75.00	↓	PENDING BUY	66.00	-2.37%	10.95%
ADIB	Abu Dhabi Islamic Bank - Egypt	48.49	47.00	45.00	50.00	54.00	↔	TRADE RANGE	47.00	-3.07%	11.36%
AMOC	Alexandria Mineral Oils Co	7.75	7.55	7.25	8.15	8.55	↔	TRADE RANGE	7.55	-2.58%	10.32%
ARCC	Arabian Cement Company	55.09	54.15	52.00	58.00	62.00	↔	TRADE RANGE	54.15	-1.71%	12.54%
BTFH	Beltone Holding	2.95	2.90	2.75	3.15	3.35	↔	TRADE RANGE	2.90	-1.69%	13.56%
CCAP	QALA For Financial Investments	4.77	4.55	4.25	5.00	5.25	↔	TRADE RANGE	4.55	-4.61%	10.06%
COMI	Commercial International Bank - Egypt (CIB)	127.50	125.00	122.00	135.00	142.00	↔	TRADE RANGE	125.00	-1.96%	11.37%
EAST	Eastern Co	37.50	36.75	36.00	39.25	42.00	↔	TRADE RANGE	36.75	-2.00%	12.00%
EFID	Edita Food Industries SAE	27.30	26.75	25.50	29.00	31.00	↔	TRADE RANGE	26.75	-2.01%	13.55%
EFIH	E-finance For Digital and Financial Investments	20.29	19.55	18.75	21.75	23.00	↔	TRADE RANGE	19.55	-3.65%	13.36%
EGAL	Egypt Aluminum	286.90	275.00	260.00	300.00	320.00	↓	Hold/Reduce	275.00	-4.15%	11.54%
EGCH	Egyptian Chemical Industries	12.20	12.00	11.75	13.00	13.75	↔	TRADE RANGE	12.00	-1.64%	12.70%
EMFD	Emaar Misr for Development SAE	11.61	11.25	11.00	12.15	13.00	↑	TAKE PROFIT	11.25	-3.10%	11.97%
ETEL	Telecom Egypt	92.30	88.75	86.00	96.55	103.00	↔	TRADE RANGE	88.75	-3.85%	11.59%
FWRY	Fawry For Banking Technology And Electronic Pa	18.40	18.15	17.75	19.15	20.75	↓	REDUCE	18.15	-1.36%	12.77%
GBCO	GB Corp	32.45	31.50	30.00	34.00	36.00	↑	HOLD	31.50	-2.93%	10.94%
HELI	Heliopolis Housing	6.40	6.25	6.15	7.00	7.25	↔	TRADE RANGE	6.25	-2.34%	13.28%
HRHO	EFG Holding	26.70	26.25	26.00	28.25	30.00	↔	TRADE RANGE	26.25	-1.69%	12.36%
ISPH	Ibnsina Pharma	11.67	11.25	10.75	12.25	13.00	↑	BUY DIPS	11.25	-3.60%	11.40%
JUFO	Juhayna Food Industries	29.72	29.00	28.00	32.00	33.00	↑	BUY DIPS	29.00	-2.42%	11.04%
MCQE	Misr Cement - Qena	170.64	166.00	163.55	175.00	190.00	↓	REDUCE	166.00	-2.72%	11.35%
OIH	Orascom Investment Holding	1.41	1.39	1.35	1.50	1.56	↔	TRADE RANGE	1.39	-1.42%	10.64%
ORAS	Orascom Construction PLC	720.00	700.00	675.00	755.00	800.00	↑	Hold/Reduce	700.00	-2.78%	11.11%
ORHD	Orascom Development Egypt	38.39	37.75	36.55	42.00	43.00	↑	Hold/Reduce	37.75	-1.67%	12.01%
ORWE	Oriental Weavers	22.40	22.00	21.50	23.75	25.00	↔	TRADE RANGE	22.00	-1.79%	11.61%
PHDC	Palm Hills Development	14.60	14.50	14.15	15.55	16.55	↑	Hold/Reduce	14.50	-0.68%	13.36%
RAYA	Raya Holding For Financial Investments	7.68	7.50	7.00	8.00	8.50	↑	TAKE PROFIT	7.50	-2.34%	10.68%
RMDA	Tenth Of Ramadan Pharmaceutical Industries&D	4.95	4.75	4.55	5.25	5.55	↔	TRADE RANGE	4.75	-4.04%	12.12%
TMGH	Talaat Moustafa Group Holding	94.49	92.00	91.00	97.00	104.00	↔	TRADE RANGE	92.00	-2.64%	10.06%
VLMR	Valmore Holding	0.662	0.660	0.630	0.700	0.750	↓	PENDING BUY	0.660	-0.30%	13.29%
VLMRA	Valmore Holding-EGP	28.51	27.75	26.75	30.00	32.00	↔	Hold/Reduce	27.75	-2.67%	12.24%

Prepared by

Bassem Abo Ghanima

Chief Technical strategist

Bghanima@arabeyaonline.com

Elaaf Al-Mudeer

Technical Analyst

Emuntaser@arabeyaonline.com

Nourhan Ashraf

Junior Technical Analyst

Nashraf@arabeyaonline.com

To Communicate:

Mourad Lotfy

Institutional Trading Manager

mlofty@arabeyaonline.com

Hassan Samir Farid

Managing Director

Hsamir@arabeyaonline.com

Mostafa El-Debawy

Managing Director - Branches

Meldebawy@arabeyaonline.com

Commercial Website www.arabeyaonline.com

Trading Website www.aolbeg.com

Contact us **16225**

DISCLAIMER



This report has been prepared according to the general data available for public, in accordance with the professional standards applied in that career to the best knowledge of the reporter. The recommendations mentioned are a guiding tool representing a professional opinion, and not granting any profits, consequently it is not obligatory for our valued customers and investors. "Arabeya online Brokerage AOLb" shall not be liable for any direct, indirect, incidental, or consequential damages, including limitation losses, lost revenues, or lost profits that may result from these materials. Republishing this report or any of its contents is subject to prior approval; referring to the source is a must. Opinions expressed are subject to change without notice and may differ or be contrary to the opinions or recommendations of "Arabeya online Brokerage AOLb" Research or the opinions expressed by other business areas or groups of "Arabeya online Brokerage AOLb" as a result of depending solely on the historical technical behavior (price and volume).

Bassem Abo Ghanima
CFTe, CETA

CHIEF TECHNICAL STRATEGIST

Elaaf A L Moudeer

TECHNICAL ANALYST

Nourhan Ashraf

JUNIOR TECHNICAL ANALYST

2000

Jan Feb Mar Apr May Jun Jul Aug Sep Oct Nov Dec